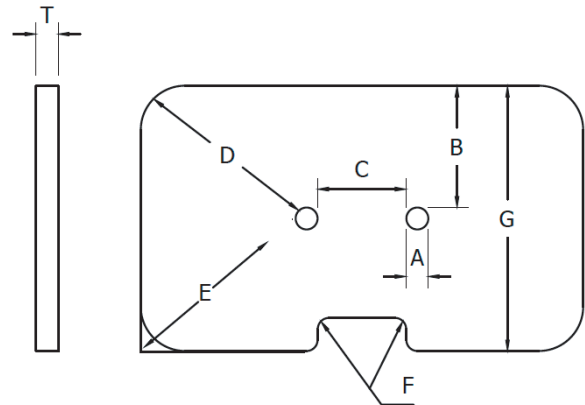


Tempering Guidelines

ASTM C1048 FOR HOLES AND NOTCHES

Holes, Countersinks, and Notches

The guidelines for holes and notches are consistent with procedures stated in Section 7.7 of the ASTM Standard Specification C 1048 (Standard Specification for Heat-Strengthened and fully tempered flat glass). Countersinks require special attention and must be reviewed with the factory prior to order entry.



Section View

Elevation View

The following represents general guidelines for determining the minimum size and placement of holes and notches in heat-strengthened or tempered glass.

GLASS THICKNESS	1/8	3/16	1/4	3/8	1/2	3/4	GENERAL RULE
A - Diameter of Holes	1/4"	1/4"	1/4"	3/8"	1/2"	3/4"	$A \geq 1/4"$ or T
B - Distance from Rim to Edge of Glass	1/4"	3/8"	1/2"	3/4"	1"	1-1/2"	$B \geq 1/4"$ or $2 \times T$
C - Distance between Rims of Holes	3/8"	3/8"	1/2"	3/4"	1"	1-1/2"	$C \geq 3/8"$ or $2 \times T$
D - Distance from Round Corner to Rim of Hole.	1/4"	3/8"	1/2"	3/4"	1"	1-1/2"	$D \geq 1/4"$ or $2 \times T$
E - Distance from Corner to Rim of Hole	13/16"	1-7/32"	1-5/8"	2-7/16"	3-1/4"	4-7/8"	$E \geq 6.5 \times T$
F - Minimum Fillet Radius	1/8"	3/16"	1/4"	3/8"	1/2"	3/4"	$F \geq T$
G - Minimum Glass Width	PLEASE CONTACT CVGS						

NOTES:

- Maximum diameter for holes not to exceed 1/3 the narrow dimension of a plate.
- Reference ASTM C 1048 for additional guidelines.

* Minimum glass size for squares is 7x7 and for rectangles is 3x10.

This only applies to tempering. Smaller sizes are available as annealed glass.

Central Valley Glass & Screen, Inc.

5854 88th Street, Sacramento, CA 95828

PH: (916) 394-5200 • Fax: (916) 394-5289 • orders@CVGSONline.com • www.cvgsonline.com